

The Harbor Light

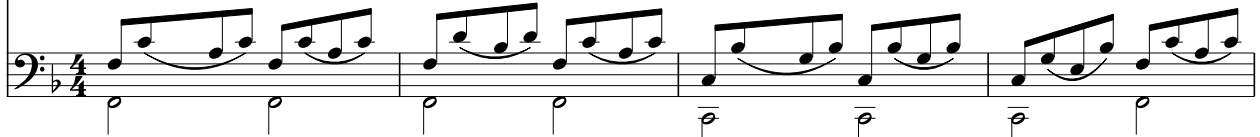
Frank F. Carpenter, 1899

Edwin Gardner

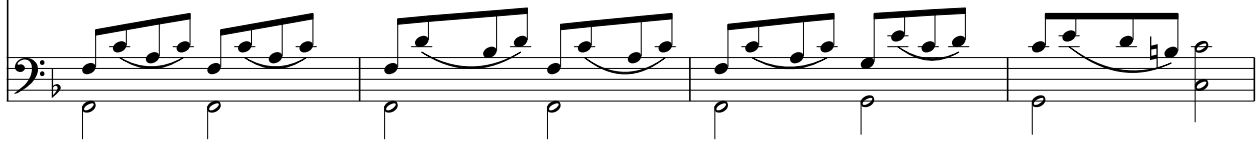
♩=105



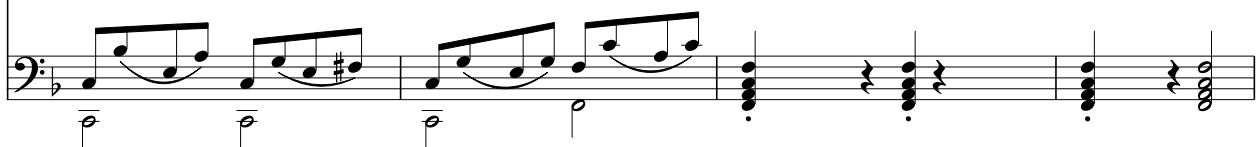
1. Flash - ing o'er the track - less o - cean Gleams the light up - on the wave,
2. If the dark - ness close a - bout you, And the an - gry bil - lows foam,
3. It is light - ing up the chan - nel, It il - lum - ines all the way,



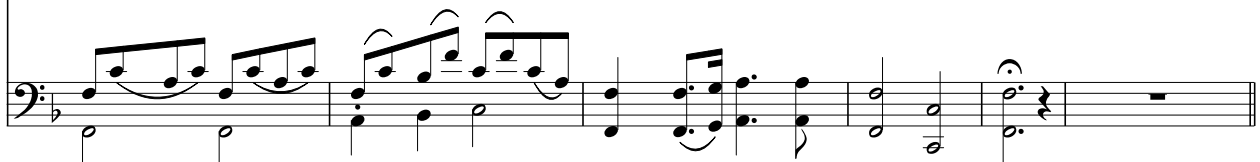
Mid the toss - ing storm's com - mo - tion, From the light - house placed to save.
If the winds sweep wild - ly round you, Chris - tian sai - lor far from home,
And will ne - ver cease to guide us Till there dawns e - ter - nal day;



See it as its si - lent bright - ness Speaks to wan - derers on the main;
Put your trust in Christ the Sav - ior, He will guide you ev - er - more;
Then, when an - chored in the har - bor, And life's voyage is safe - ly o'er,



Steer this way, be - night - ed sea - man, If the port you'd safe - ly gain.
Watch the beam - ing of the bea - con From the light - house on the shore.
We will prais - es give to Je - sus, For the light a - long the shore.



Refrain *Poco animato*

Look to Je - sus, Chris-tian sai-lor, While the rag - ing tem-pests roar; Watch the gleam-ing

cresc. *<* *f* *>* *p* *ff* *dim.*

of the bea-con, He's the light a - long the shore, He's the light a - long the shore.