

# Come to the Manger, in Bethlehem

Elizabeth Harcourt Rolls Mitchell, 1881

Samuel Smith



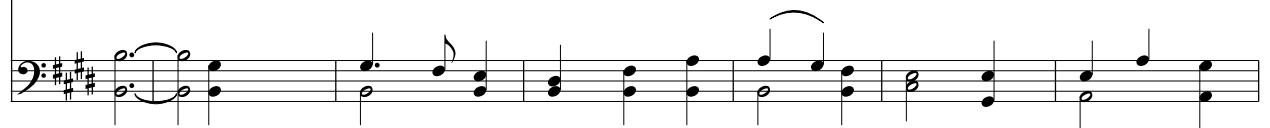
1. Come to the man-ger in Beth-le - hem, A sweet Child lies there-in,  
2. But the heart of the worl-d is far too small To take in that lit - tle Child,  
3. Come to the man-ger in Beth-le - hem, Never mind the frost and snow,  
4. And the mo - re the co - ld world turns Him out, The more we will take Him in,



A ho - ly Child come down to earth To save the world from  
It sends Him away; there is no room For His face so sweet and  
We will think of the Child, and the thought of Him Shall warm us as  
When our hearts are full of the ho - ly Child They will have no room for



sin; A lit - tle Child with a heart so large, It ta - kes the  
mild; They would turn Him out if they on - ly could To the sto - rm so  
we go; We will kiss His ho - ly hands and feet, And tell Him we  
sin; Come to the man - ger of Beth - le - hem, For a swe-et Child



whole world in.  
rude and wild.  
love Him so!  
lies there - in!

